

## Connoisseur Offset Locking



### Features

- **Solid die cast construction**  
Heavyweight handle with sturdy feel
- **Heavy duty sprung latching wedge**  
Positive click on closing
- **Long handle**  
Greater leverage and easy to operate without catching a hand on the window
- **Classic design with a contemporary twist**  
Create an elegant and stylish window
- **Patented cover caps with colour coordinated finish**  
Perfectly matching components, even down to the smallest details
- **Secured By Design**  
Additional peace of mind
- **Key clicks into place when inserted**  
Won't fall out of the lock, even when pivoting the lever
- **Slotted spindle (40mm version only)**  
Allows cropping to 5mm increments
- **Supplied with screw and spindle pack**  
Everything needed for installation included



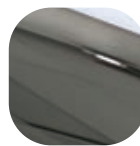
Hardex  
Chrome



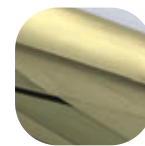
Hardex  
Satin



White



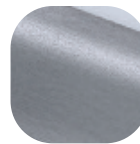
Hardex  
Bronze



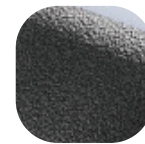
Hardex  
Gold



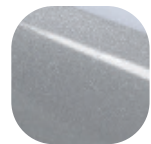
Black



Hardex  
Graphite



Antique  
Black



Silver